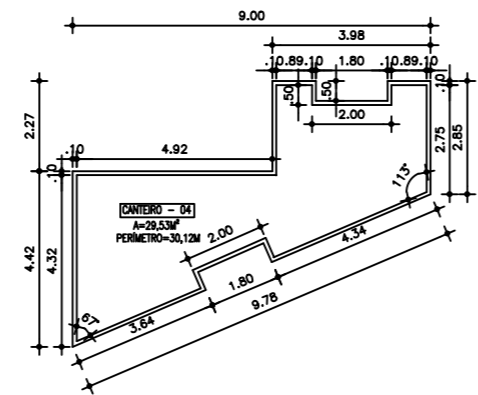
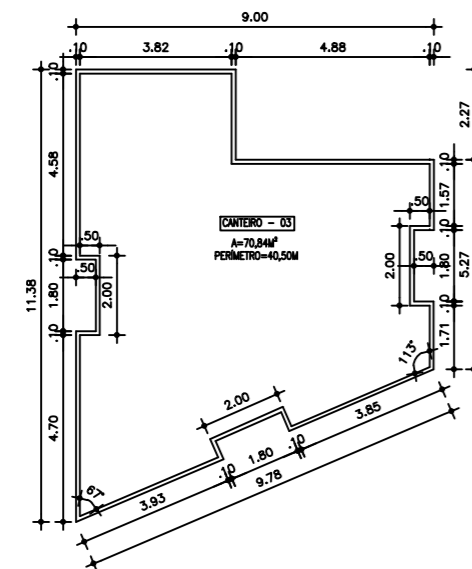
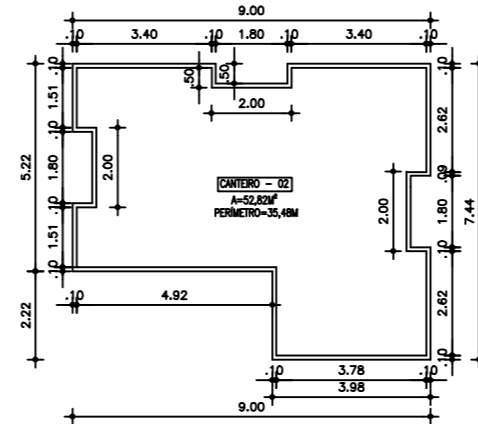
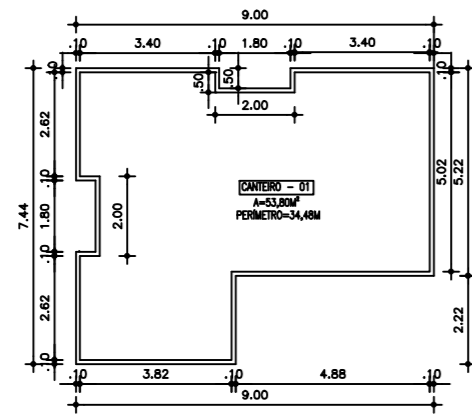
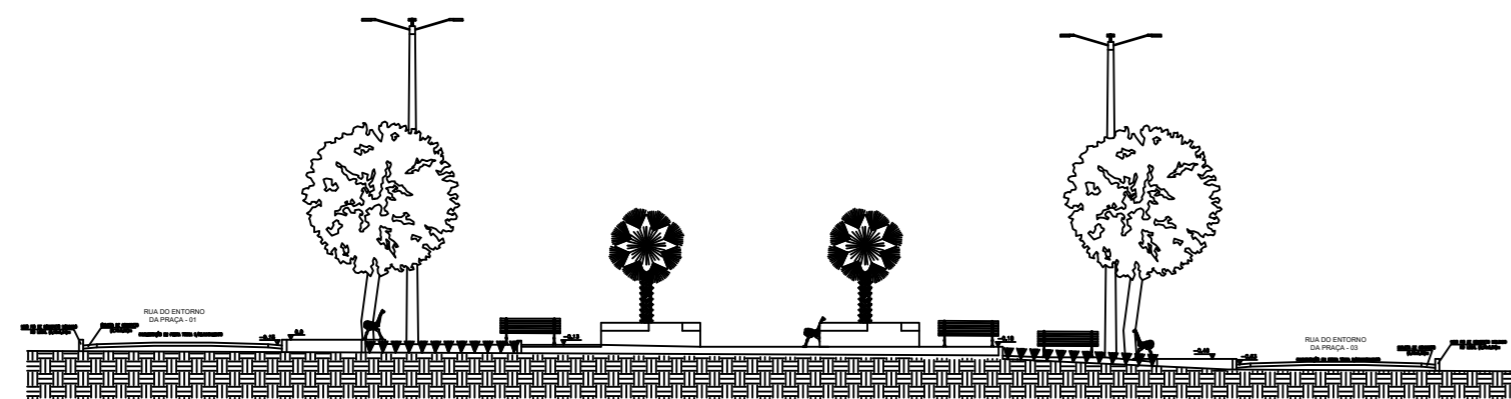
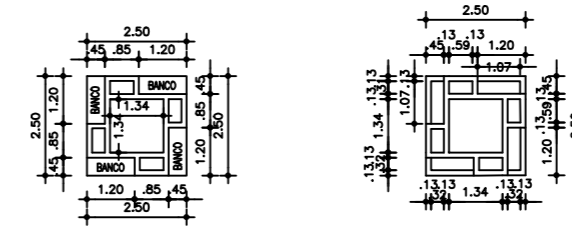


DETALHE DOS CANTEIROS
ESCALA 1/100

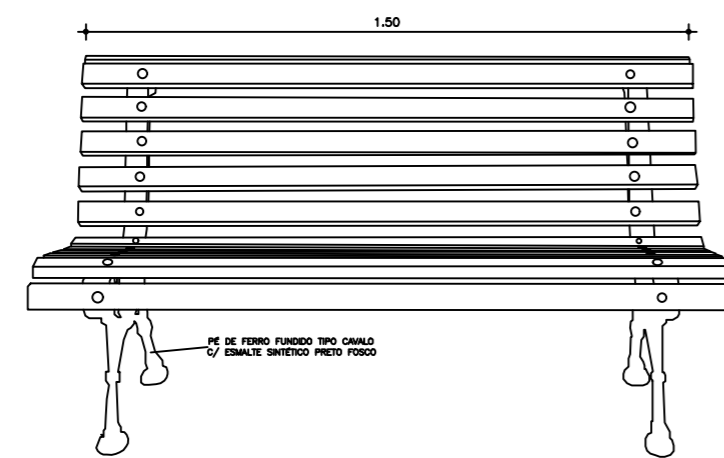
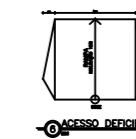
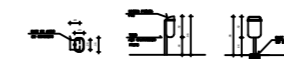


DETALHE DOS CANTEIROS 05 E 06
ESCALA 1/100

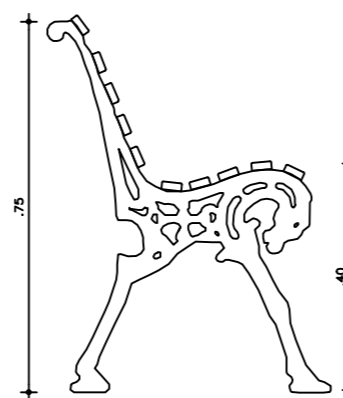


CORTE - AA

DETALHE DA LIXEIRA
ESCALA 1/100



DETALHE DO BANCO



06 - 25
07 - 15
08 - 05
REstante

PROJETO:
CONSTRUÇÃO DA PRAÇA DA COMUNIDADE DE MADEIRO
PROJETO EXECUTIVO

LOCALIZAÇÃO:
LOCALIDADE DE MADEIRO - MASSAPÉ - CE

CLIENTE:
PREFEITURA MUNICIPAL DE MASSAPÉ - CE

DESENHOS DA PRANCHA	ÁREA	ESCALA	PRANCHA N°
DETALHES DOS CANTEIROS		1/100	8 / 8
DETALHES DAS LIXEIRAS		1/100	
DETALHES DOS BANCOS		1/10	
DETALHES DAS RAMPAS		1/50	
PLANTA DE CORTE - AA		1/100	

DESENHISTA: AUTO GARCIA JÚNIOR
DATA: AGOSTO/2021