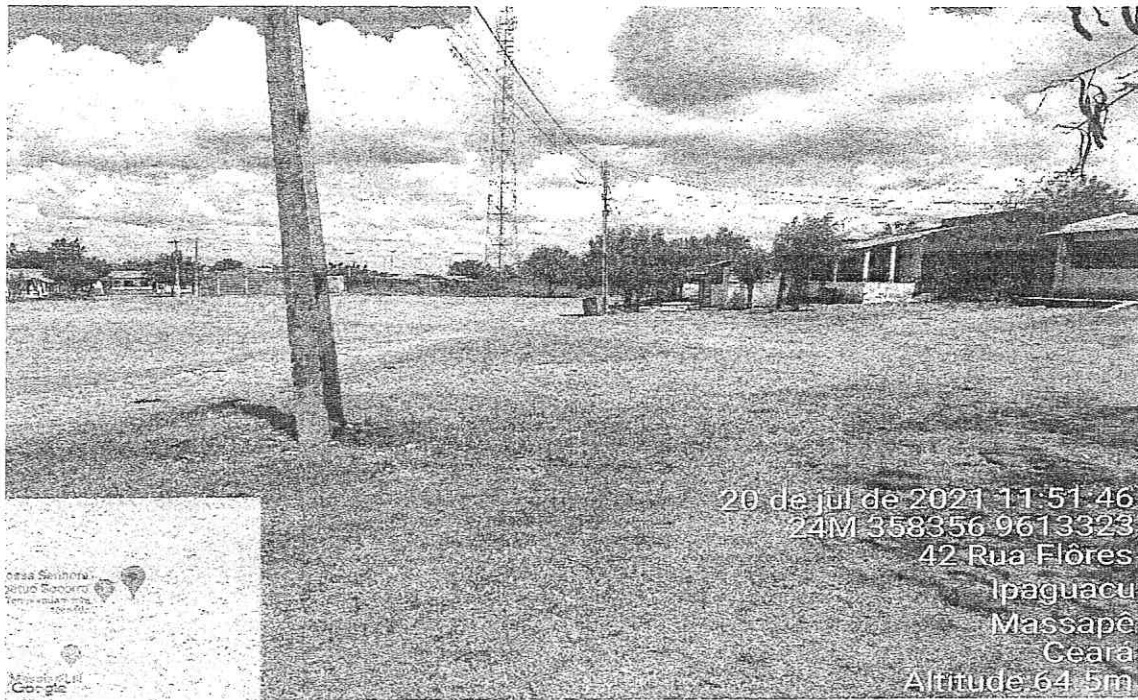




**PROJETOS GRÁFICOS E FOTOS DAS RUAS  
DO DISTRITO IPAGUAÇÚ-MIRIM**

# INICIO PAVIMENTAÇÃO NO BAIRRO DO CAMPO DO SÃO PAULO

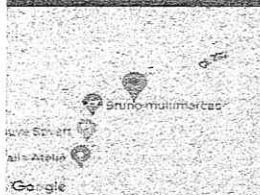


Antônio Jocélio Siridó Soares  
Engenheiro Civil  
CREA-CE 356569

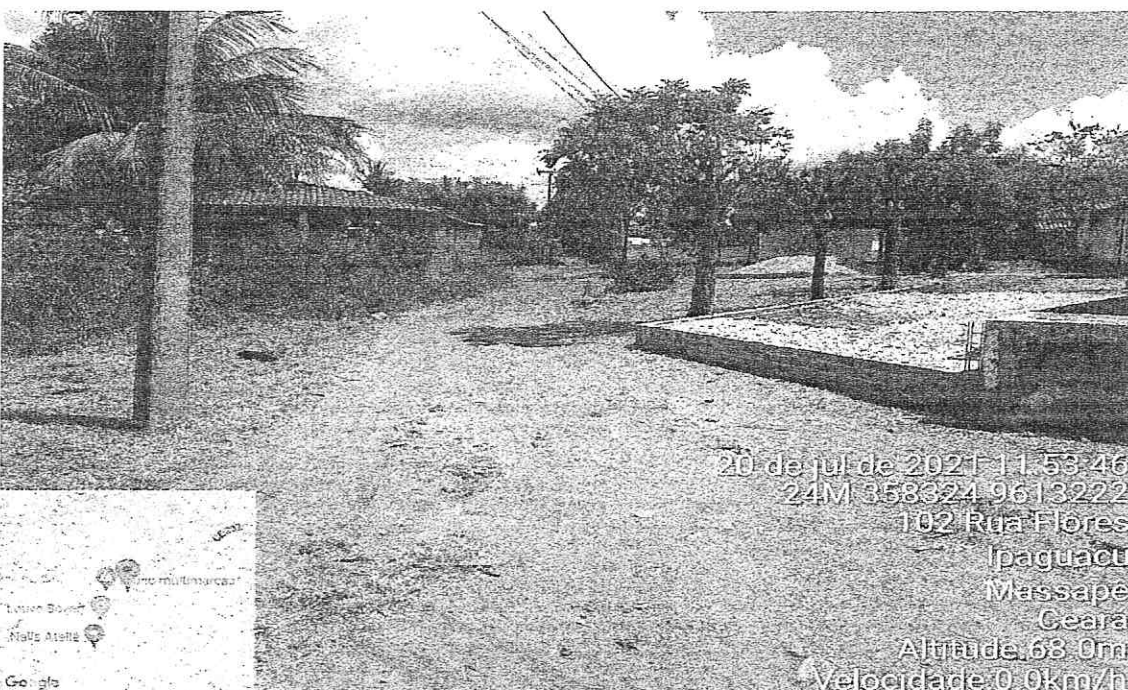
# FINAL DA RUA DO CAMPO DO SÃO PAULO



20 de jul de 2021 11:56:26  
24M 358421 9613305  
120 Rua e  
Ipaguacu  
Massapé  
Ceará  
Altitude: 66.0m  
Velocidade: 0.0km/h





# INÍCIO DA RUA FLORES



20 de jul de 2021 11:53:46  
24M 358324 9613222  
102 Rua Flores  
Ipaguacu  
Massapé  
Ceará  
Altitude: 68.0m  
Velocidade: 0.0km/h



  
Antônio Jocéllo Siridó Soares  
Engenheiro Civil  
CREA-CE 356569 

# RUA DA ESPERANÇA



20 de jul de 2021 12:12:29  
24M 358131 9613179  
86 Rua Esperança  
Ipaguacu  
Massapé  
Ceará  
Altitude: 56.0m  
Velocidade: 0.0km/h



20 de jul de 2021 11:57:37  
24M 358426 9613322  
120 Rua e  
Ipaguacu  
Massapé  
Ceará  
Altitude: 66.0m  
Velocidade: 0.0km/h

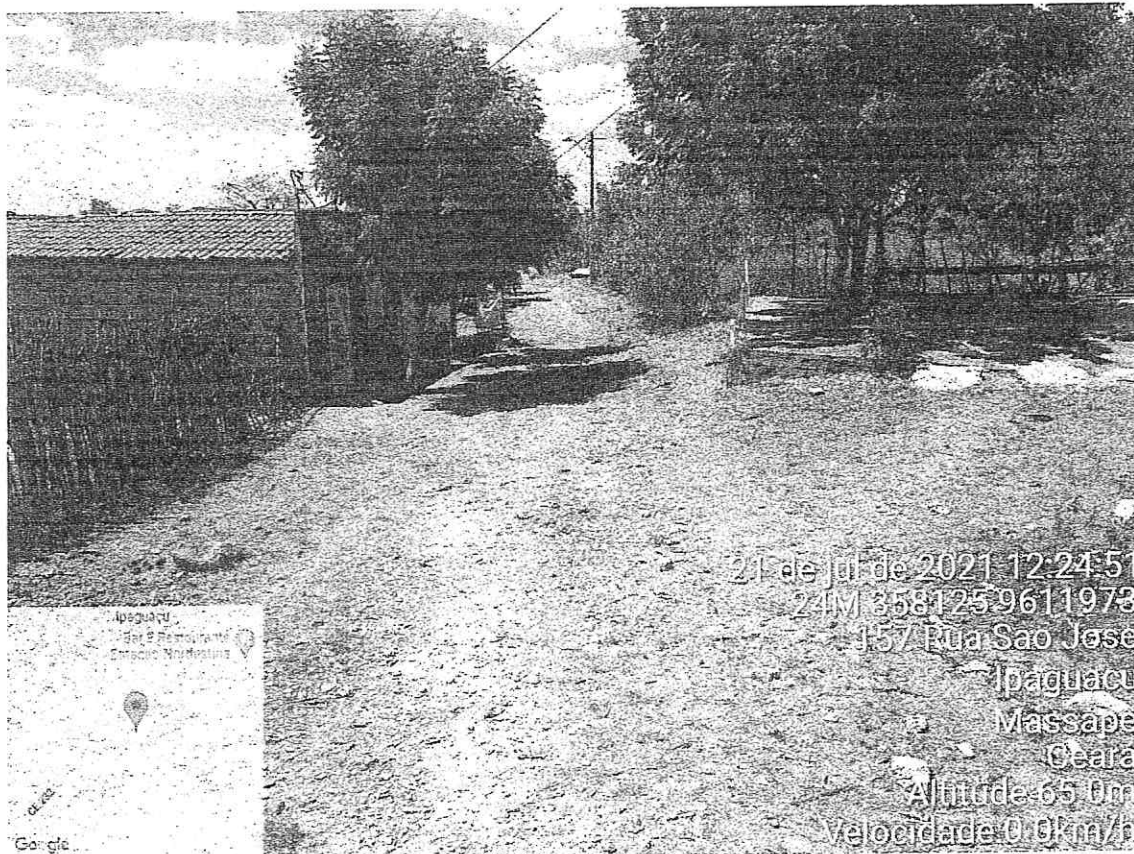


Antônio Jocélio Siridó Soares  
Engenheiro Civil  
CREA-CE 356569





20 de jul de 2021 12:14:36  
24M:3581759613121  
113 Rua José Estevão Vasconcelos  
Ipaçuacu  
Massapé  
Ceará  
Altitude: 60.0m  
Velocidade: 0.0km/h

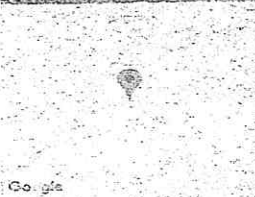


21 de jul de 2021 12:24:51  
24M:3581259611973  
157 Rua São José  
Ipaçuacu  
Massapé  
Ceará  
Altitude: 65.0m  
Velocidade: 0.0km/h

  
Antônio Jocélio Siridó Soares  
Engenheiro Civil  
CREA-CE 356569



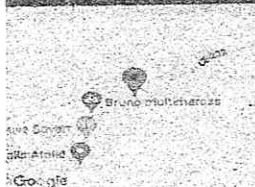
21 de jul de 2021 12:30:12  
24M 358244 9612028  
179 Rua Chafariz  
Ipaguacu  
Massape  
Ceara  
Altitude: 64.0m  
Velocidade: 0.6km/h



### RUA DA ALEGRIA



20 de jul de 2021 11:57:37  
24M 358426 9613322  
120 Rua e  
Ipaguacu  
Massape  
Ceara  
Altitude: 66.0m  
Velocidade: 0.0km/h

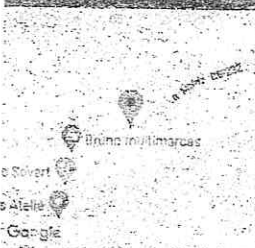


  
Antônio Jocélio Siridó Soares  
Engenheiro Civil  
CREA-CE 356569

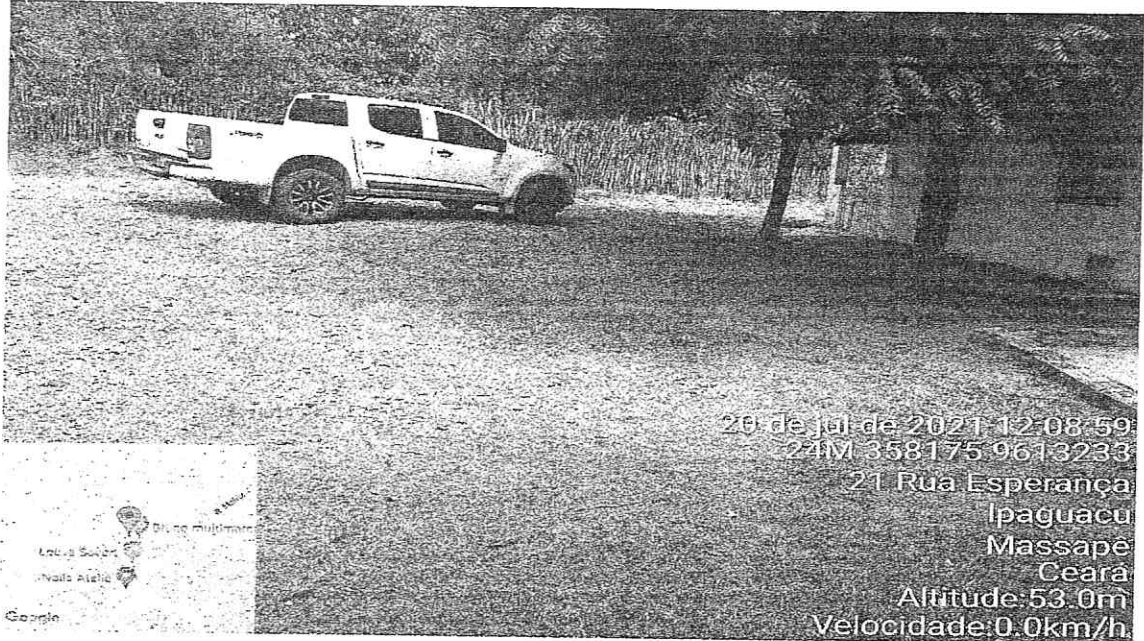




20 de jul de 2021 12:01:51  
24M 358497 9613350  
48 Rua e  
Ipaguacu  
Massape  
Ceará  
Altitude: 62.0m  
Velocidade: 0.0km/h



### TRAVESSA SDO I



20 de jul de 2021 12:08:59  
24M 358175 9613233  
21 Rua Esperança  
Ipaguacu  
Massape  
Ceará  
Altitude: 53.0m  
Velocidade: 0.0km/h



  
Antônio Jocélio Siridó Soares  
Engenheiro Civil  
CREA-CE 356569

